

WELCOME TO THE
STATE COMPLETE COUNT COMMITTEE WEBINAR
Part of the “ Plan to Plan for Census 2020 Series”

HOSTED BY:
STATE DATA CENTER STEERING COMMITTEE (SDC)
and the U.S. CENSUS BUREAU – DATA USER BRANCH
(DUB)



October 3, 2018





MT's site: <http://ceic.mt.gov/Census2020>

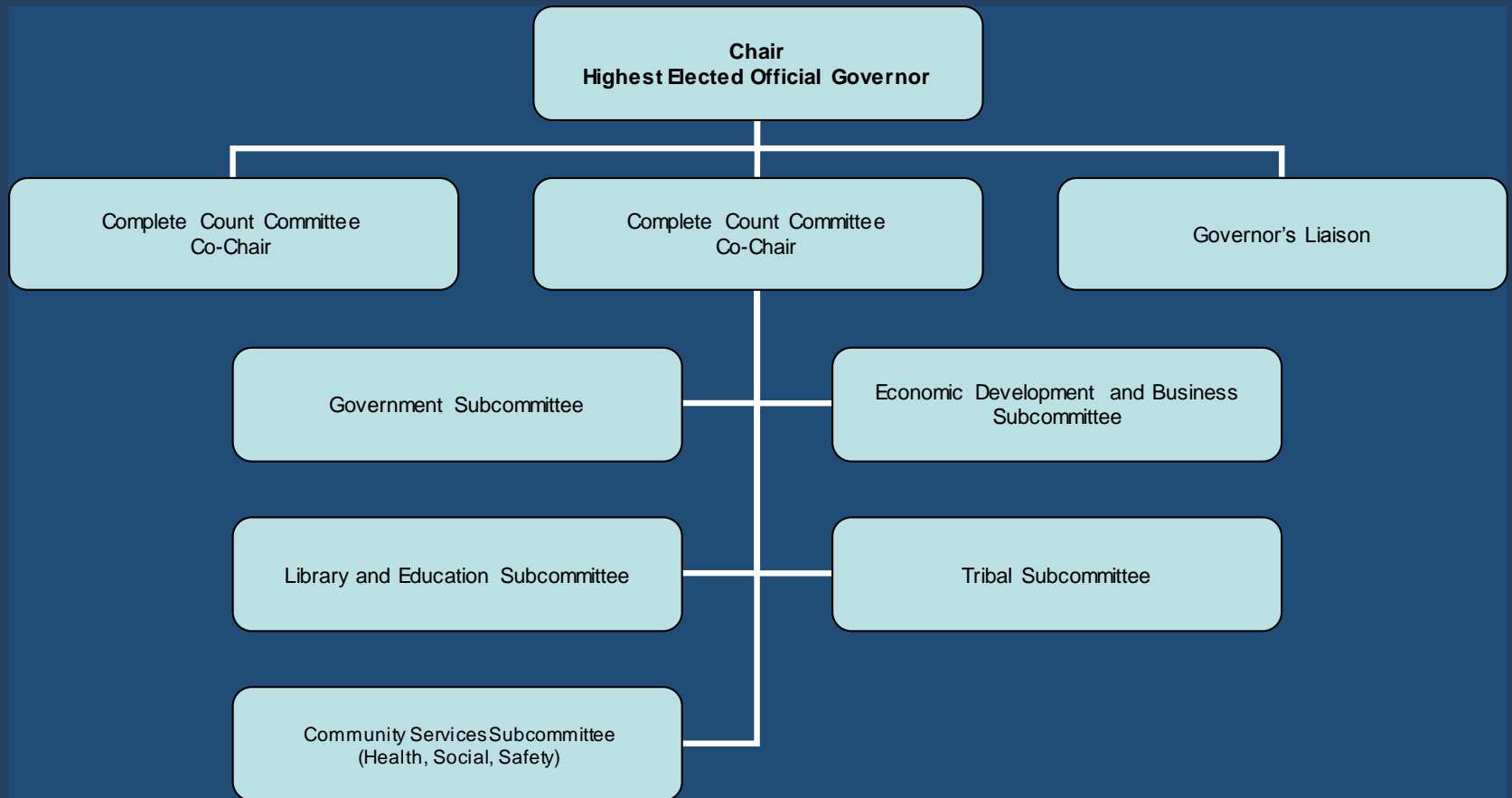
Census Bureau site: <https://www.census.gov/2020census>

MONTANA



Structure of the MT CCC

28 Members



MT CCC Leadership

Montana Complete Count Committee (CCC) Members

Mike Cooney
MT CCC Chair
Lt. Governor

Kathie Bailey
MT CCC Co-Chair
Executive Director
Snowy Mountain Development Corporation

Leonard Smith
CCC Co-Chair
Executive Director
Native American Development Corporation



MT CCC Government Committee

Eric Bryson

Executive Director

Montana Association of **Counties**

Tim Burton

Executive Director

Montana League of **Cities & Towns**

Joe Kolman

Legislative Analyst | **Redistricting** Staff

Legislative Services Division

Susan Fox

Executive Director

MT **Legislative** Services Division

Eric Feaver

President

Montana Federation of **Public
Employees**



MT CCC Economic Development & Business Subcommittee

Pam Haxby-Cote

Director

Montana Department of **Commerce**

Dan Brunell

Operations Director

Montana **Chamber of Commerce**

Aaron Pratt

Business Development Specialist

**Governor's Office of Economic
Development**

Gloria O'Rourke

Executive Director

Montana **Economic Developers
Association**



MT CCC Library & Education Subcommittee

Erik Rose

Commissioner of **Higher
Education**

Siri Smillie

Policy **Advisor for Education**
Governor's Office

Bob Vogel

**Montana School Board
Association**

Susie Hedalen

Deputy Superintendent

Education Services

Office of Public Instruction (**K-12**)

Jennie Stapp

State Librarian

Montana State Library



MT CCC Tribal Subcommittee

Delina Cuts the Rope

Census Tribal Partnership Specialist
Chief Administrative Officer

Fort Belknap Indian Community Council

Javon Wing

Census Tribal Partnership Specialist
Planning & Development

Chippewa Cree Tribe

George Kipp

Census Tribal Partnership Specialist
Director **Blackfeet** Manpower One-Stop

Lonnie Headdress

Census Tribal Partnership Specialist
Vice Chairman

Fort Peck Tribal Exec Board

Michael Gray

Little Shell Tribe Liaison
President
G & G Advertising

Jason Smith

Director of Indian Affairs
Governor's Office of Indian Affairs



MT CCC Community Services Subcommittee

Sara Loewen

Bureau Chief, Intergovernmental

Human Services

MT **Public Health & Human Services**

Mary Rutherford

President & CEO

MT Community Foundation

Richard Miltenberger

Director

Montana Health CO-OP

Joan Taylor

Chair Governor's Advisory

Council on Aging

Heather O'Loughlin

Director

Montana **Budget & Policy Center**



State CCC Tasks



- Build strategy for each committee
- Assist CEIC in developing messaging and materials using available resources
- Look for events and opportunities to deliver the 2020 Census message and identify messengers
- Leverage with other resources where possible
- Work closely with our MT US Census Partners – state, tribal and the regional office
- Coordinate as best possible with local CCCs

Mary Craigle, Bureau Chief
RESEARCH & INFORMATION SERVICES
MONTANA DEPARTMENT OF COMMERCE
T: 406.841.2742 | C: 406.431.9434 | F: 406.841.2871
<http://ceic.mt.gov/Census2020>

VISIT.COM | MARKETMT.COM

